

Descrizione - Description	Unità di misura - Unit of measurement	Grandezze - Size											
		25-16 ^(b)	25-19 ^(b)	32-16	40-16	50-16	32-20 ^(d)	40-20 ^(d)	50-20	65-16	80-16	65-20	80-20
Grandezza lanterna - Lantern bracket size		1				2				3			
Corpo - Casing													
Spessore corpo - Casing thickness	mm	4	4	4	4	4	4,5	4,5	4,5	4,5	5	5	5
Pressione di prova - Max.hydrostatic pressure	bar	6				8				6	8		
Foro drenaggio - Casing drain		G.1/4				G.1/4				G.1/4			
Girante - Impeller													
Numero di pale - Blade number	mm	5	5	5	5	6	5	5	5	6	6	6	6
Luce di uscita girante - Impeller width	mm	6	6	6	8,5	13,5	6	7	11	19	27	16	21
Dia ingresso - Inlet diameter	mm	56	56	67	67	83	58	68	82	65	80	100	65
Dia massimo - Max.diameter	mm	169	190	169	169	169	209	209	209	169	169	209	209
Dia minimo - Min.diameter	mm	110	170	110	110	110	140	140	140	130	130	150	150
Momento di inerzia J ^(a) - Moment of inertia J ^(a)	kgm ²	0,01	0,01	0,01	0,01	0,01	0,02	0,02	0,02	0,01	0,01	0,02	0,02
Cassa stoppa - Jacket packing gland													
Diametro - Diameter	mm	40				49				49			
Profondità - Deep	mm	45				51				51			
Sezione baderna - Section packing	mm	8				8				8			
N.° anelli con anello idr. - With lantern ring		4				5				5			
N.° anelli senza anello idr. - Without lantern ring		5				6				6			
Dia. tenuta meccanica - Dia.mechanical seal	mm	24				33				33			
Ingresso anello idraulico - Lantern ring holes		G.1/4				G.1/4				G.1/4			
Ingresso Ten. Mecc. - Connections mech. seal		G.1/4				G.1/4				G.1/4			
Camera di raffreddamento - Cooling jacket													
Pressione max - Max.pressure	bar	3				3				3			
Pressione di prova - Max.hydrostatic pressure	bar	4,5				4,5				4,5			
Connessioni - Connections holes		G.3/8				G.3/8				G.3/8			
Albero - Shaft													
Diametro albero - Shaft diameter	mm	24				33				33			
Diam. sotto la girante - Shaft dia. under impeller	mm	20				20				28			
Potenza max. - Max. Power													
Valore max. P/n - Max.value P/n		0,0052				0,0064				0,0076			
Potenza max. - Max.power to 960 1/min.	kW	5				6				7,3			
Potenza max. - Max.power to 1450 1/min.	kW	7,5				9,2				11			
Potenza max. - Max.power to 2900 1/min.	kW	15				18,5				22			

I dati indicati non sono impegnativi e possono cambiare con le condizioni di lavoro
 Technical data are indicative and they can change according to pump work

^(b) Grandezze disponibili solo nella serie HD
^(b) Size available only HD type

^(a) Dividi per 1000 per ottenere il momento di inerzia J in kgm²
 Divide by 1000 to obtain the moment of inertia J in kgm²

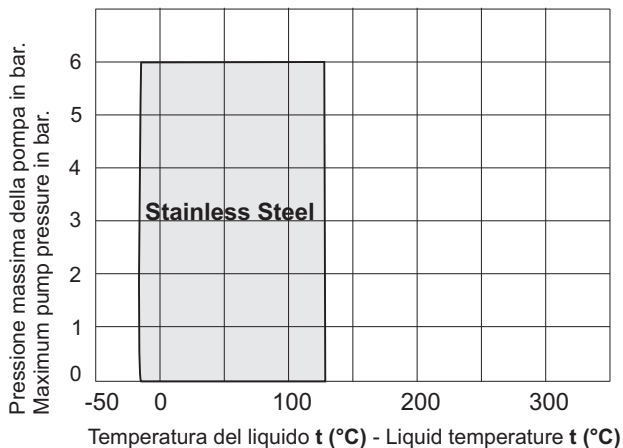
^(d) Utilizzare serie RS (RS 32-20 ; RS 40-20)
^(d) Use RS type (RS 32-20 ; RS 40-20)

Limiti di pressione e di temperatura

(Senza prescrizioni speciali)

Impiego per tutti i liquidi, ad eccezione di acqua calda e liquidi diatermici organici.

Materiali di costruzione :
 Construction materials :



Materiali a richiesta : Sanicro, SAF
 Materials on request : Sanicro, SAF

Pressure and temperature limits

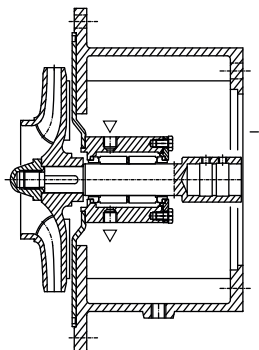
(Without special advice)

For all liquids, except hot water and organic diathermic liquid.

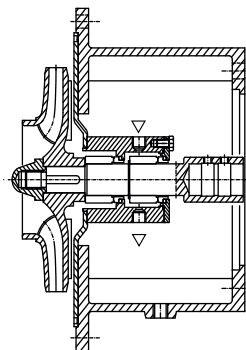
LIMITI DI IMPIEGO DUTY LIMITS

Material	Temperature	Pressione
Acciaio	-20 +120	6 Bar ^(*)
Material	Temperature	Pressure
Stainless Steel	-20 +120	6 Bar ^(*)

^(*) 8 Bar per le grandezze 32-20; 40-20; 50-20; 65-20
 8 Bar for size 32-20; 40-20; 50-20; 65-20



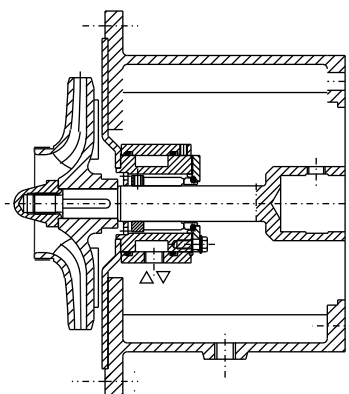
Esecuzione C
C Execution



Esecuzione L
L Execution

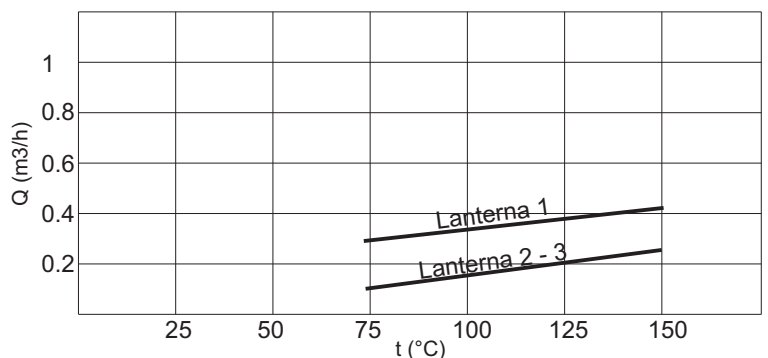
Flussaggio tenuta meccanica contrapposta **esecuzione C**
 Back to back mechanical seal flushing **C execution.**

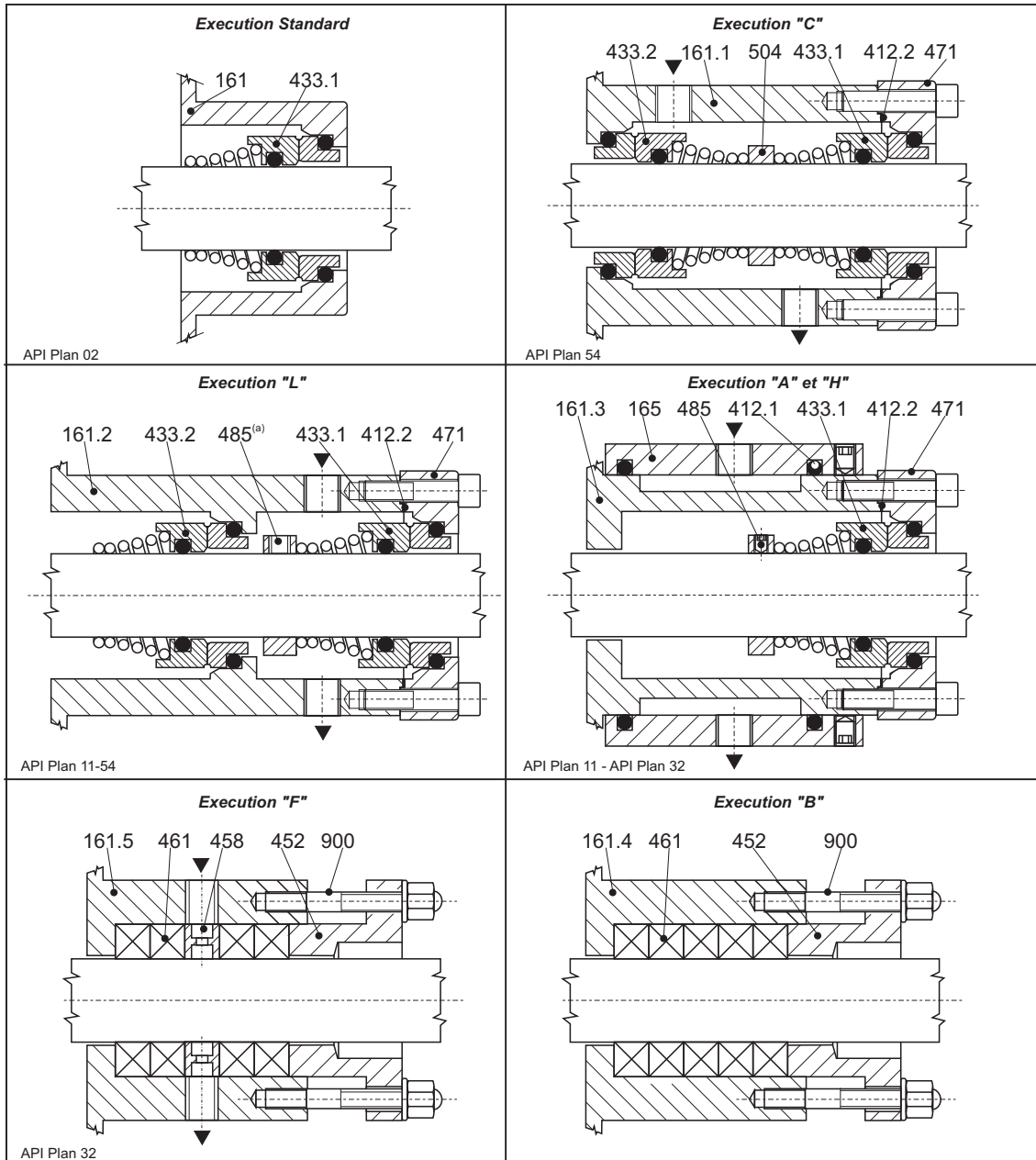
Lanterna Lantern bracket	Dia. ten. mecc. Mech. seal dia. [mm]	Portata flussaggio Flushing capacity [l/min].		P di flussaggio Flushing pressure [bar]	
		2900 rpm	1450 rpm	C	L
1 2-3	24	0,8	0,4	0.5 > p mandata 0.5 > discharge p	< 0.3
	33	1,4	0,7		



Esecuzione H
H Execution

Flussaggio camera di raffreddamento **esecuzione H**
 Cooling chamber flushing **H execution.**





Nr.	DESCRIZIONE	DESCRIPTION
161	Coperchio del corpo a tenuta meccanica	Casing cover - mechanical seal
161.1	Coperchio del corpo a esecuzione "C"	Casing cover "C" execution
161.2	Coperchio del corpo a esecuzione "L"	Casing cover "L" execution
161.3	Coperchio del corpo a esecuzione "A" e "H"	Casing cover "A" and "H" executions
161.4	Coperchio del corpo a esecuzione "B"	Casing cover "B" execution
161.5	Coperchio del corpo a esecuzione "F"	Casing cover "F" execution
165	Camicia di riscaldamento / raffreddamento	Cooling / Heating jacket
412.1	O.Ring	O.Ring
412.2	O.Ring	O.Ring
433.1	Tenuta meccanica	Mechanical seal
433.2	Tenuta meccanica	Mechanical seal
452	Premitreccia	Packing gland
458	Anello idraulico	Lantern ring
461	Baderna	Packing ring
471	Coperchio tenuta meccanica	Mechanical seal cover
485 ^(a)	Distanziale tenuta meccanica ^(a)	Mechanical seal spacer ^(a)
504	Distanziale	Spacer
900	Prigioniero con dado	Stud with nut

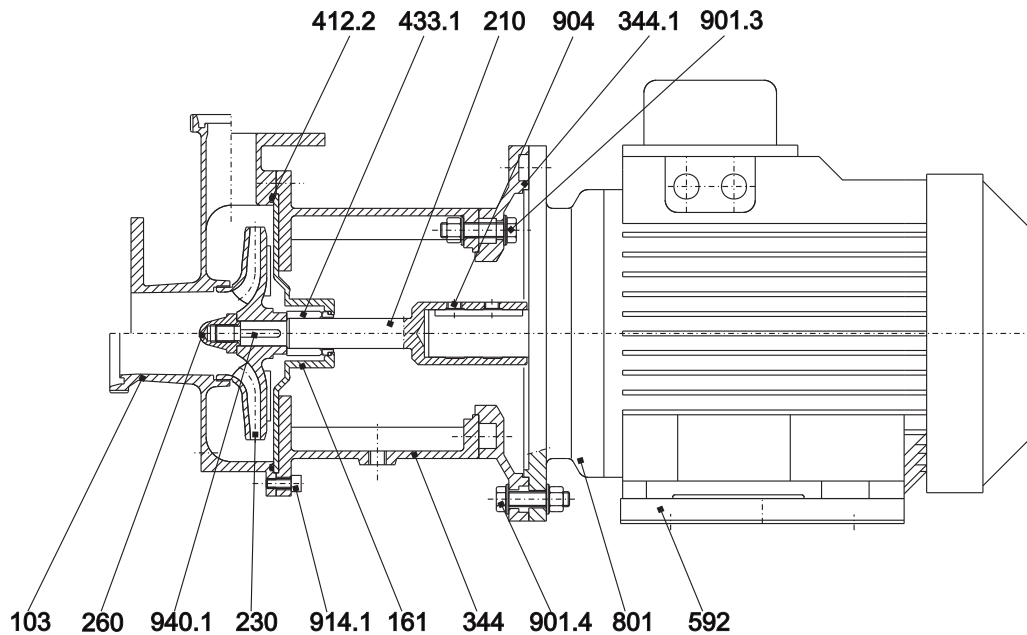
Le informazioni e i dati tecnici forniti in questo catalogo non sono impegnativi e potranno pertanto essere modificati senza preavviso.

All informations and technical data appearing in this publication are not compulsory and therefore can be modified without further notice

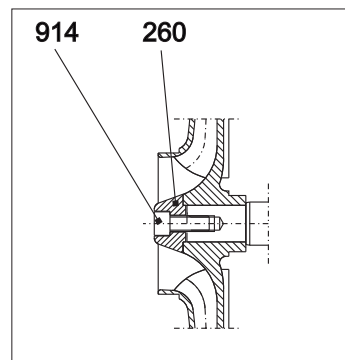
^(a) Su HD-HG con lanterna grandezza 1 (vedi tabella T-1453) viene utilizzato un seeger al posto del distanziale.

^(a) HD-HG pumps, lantern bracket size 1 (vedi tabella T-1453) : instead of the spacer, it has been mounted the circlip.

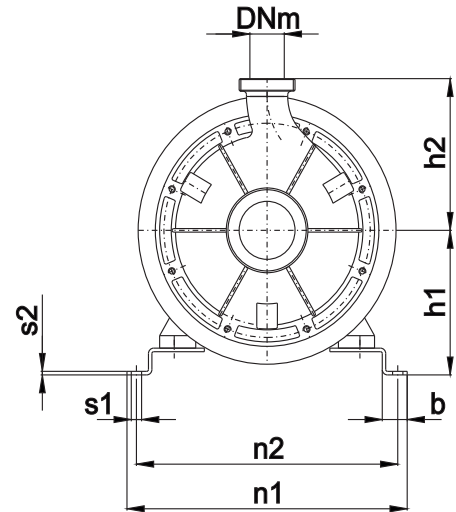
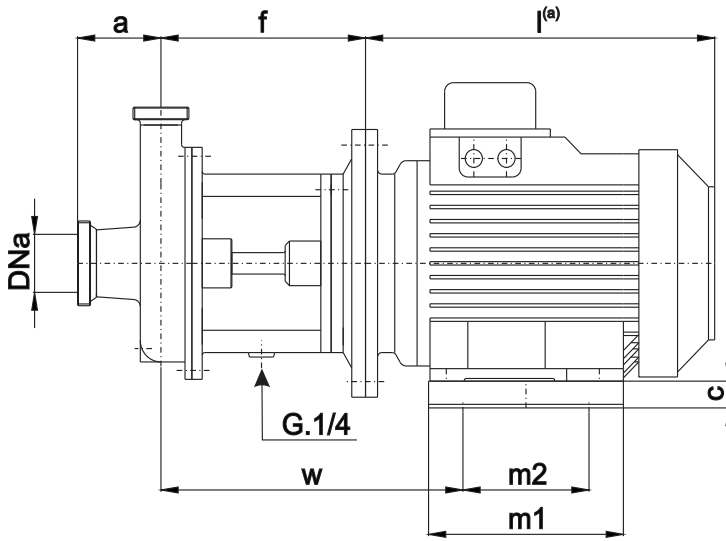
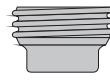
Grandezze - Size :
25-16, 25-19, 32-16, 32-20, 40-16, 40-20, 50-16, 50-20



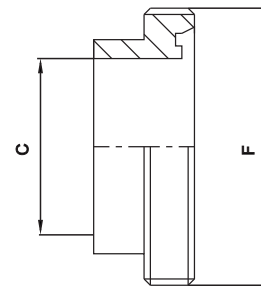
Grandezze - Size:
65-16, 65-20, 80-16, 80-20



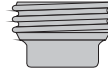
N.	DESCRIZIONE	DESCRIPTION
103	Corpo	Casing
161	Coperchio del corpo	Casing cover
210	Albero	Shaft
230	Girante	Impeller
260	Ogiva girante	Impeller hub
344	Lanterna motore	Lantern bracket
344.1	Flangia di riduzione	Reduction flange
412.2	O.Ring	O.Ring
433.1	Tenuta meccanica	Mechanical seal
592	Piede motore	Electric motor foot
801	Motore elettrico	Electric motor
901.3	Vite T.E con dado	Hex head screw with nut
901.4	Vite T.E. con dado	Hex head screw with nut
904	Grano	Locking screw
914	Vite ogivale	Screw
914.1	Vite ogivale	Screw
940.1	Linguetta girante	Impeller key



MOTORE ELETTRICO - ELECTRIC MOTOR					
Grandezza Size IEC	Potenza in kw Power in kw			L ^(a) [mm]	Peso ^(a) Weight [kg]
	2 Poli 2 Poles	4 Poli 4 Poles	6 Poli 6 Poles		
80	0.75	0.55	0.37	232	9
80	1.1	0.75	0.55	232	10
90	1.5	1.1	0.75	245	13
90	2.2	1.5	1.1	270	16
100	3	2.2	1.5	298	21
100	-	3	-	298	23
112	4	4	2.2	312	30
132	5.5	5.5	3	381	40
132	7.5	7.5	4	381	50
132	9.2	9.2	5.5	381	50
160	11	11	7.5	486	76
160	15	15	11	486	85
160	18.5	-	-	486	95
180	22	18.5	-	576	125
180	-	22	15	576	145



DIN 11851		
DN	C	F
25	25,0	52x1/6
32	31,0	58x1/6
40	37,0	65x1/6
50	49,0	78x1/6
65	66,0	95x1/6
80	81,0	110x1/4
100	97,6	130x1/4



Pompa tipo Pump size	Motore Elettrico Electric Motor IEC	DIMENSIONI - DIMENSIONS [mm]															Peso ^(b) Weight [kg]
		Pompa - Pumps						Piedi - Feet									
		DNa	DNm	a	f	h1	h2	b	c	m1	m2	n1	n2	s1	s2	w	
25-16	80	40	25	76	194	155	161	23	75	300	220	203	183	10	3	184	15
	90	"	"	"	194	165	"	23	75	300	220	216	198	10	3	190	15
	100	"	"	"	214	155	"	25	55	280	200	240	218	12	3	247	21
	112	"	"	"	214	167	"	25	55	280	200	270	248	12	3	254	21
32-16	80	50	32	95	194	155	175	23	75	300	220	203	183	10	3	184	18
	90	"	"	"	194	165	"	23	75	300	220	218	198	10	3	190	18
	100	"	"	"	214	155	"	25	55	280	200	240	218	12	3	247	24
	112	"	"	"	214	167	"	25	55	280	200	270	248	12	3	254	24
	132	"	"	"	234	162	"	29	30	340	220	326	304	14	4	283	24
32-20	VEDI RS 32 - 20 SEE RS 32 - 20																
40-16	80	65	40	97	198	155	175	23	75	300	220	203	183	10	3	188	20
	90	"	"	"	198	165	"	23	75	300	220	218	198	10	3	194	20
	100	"	"	"	218	155	"	25	55	280	200	240	218	12	3	251	26
	112	"	"	"	218	167	"	25	55	280	200	270	248	12	3	258	26
	132	"	"	"	238	162	"	29	30	340	220	326	304	14	4	287	26
40-20	VEDI RS 40 - 20 SEE RS 40 - 20																
50-16	80	80	50	133	203	155	195	23	75	300	220	203	183	10	3	193	21
	90	"	"	"	203	165	"	23	75	300	220	218	198	10	3	199	21
	100	"	"	"	223	155	"	25	55	280	200	240	218	12	3	256	27
	112	"	"	"	223	167	"	25	55	280	200	270	248	12	3	263	27
	132	"	"	"	243	162	"	29	30	340	220	326	304	14	4	292	27
	160	"	"	"	273	210	"	45	50	500	350	404	364	15	5	311	32
50-20	80	80	50	133	221	155	215	23	75	300	220	203	183	10	3	211	27
	90	"	"	"	221	165	"	23	75	300	220	218	198	10	3	217	27
	100	"	"	"	238	155	"	25	55	280	200	240	218	12	3	271	33
	112	"	"	"	238	167	"	25	55	280	200	270	248	12	3	281	33
	132	"	"	"	261	162	"	29	30	340	220	326	304	14	4	310	33
	160	"	"	"	291	210	"	45	50	500	350	404	364	15	5	329	41
65-16	80	100	65	143	230	155	217	23	75	300	220	203	183	10	3	220	29
	90	"	"	"	230	165	"	23	75	300	220	218	198	10	3	225	29
	100	"	"	"	250	155	"	25	55	280	200	240	218	12	3	282	35
	112	"	"	"	250	167	"	25	55	280	200	270	248	12	3	290	35
	132	"	"	"	270	162	"	29	30	340	220	326	304	14	4	318	35
	160	"	"	"	300	210	"	45	50	500	350	404	364	15	5	338	43
65-20	90	100	65	143	229	190	242	30	100	370	220	234	207	12	3	225	35
	100	"	"	"	249	200	"	30	100	370	220	254	227	12	3	272	41
	112	"	"	"	249	212	"	30	100	370	220	284	257	12	3	279	41
	132	"	"	"	269	212	"	31	80	400	300	325	298	12	4	278	41
	160	"	"	"	299	210	"	45	50	500	350	404	364	15	5	337	49
	180	"	"	"	299	230	"	45	50	500	350	429	389	15	5	365	49
80-16	90	125	80	170	236	190	258	30	100	370	220	234	207	12	3	232	37
	100	"	"	"	256	200	"	30	100	370	220	254	227	12	3	279	43
	112	"	"	"	256	212	"	30	100	370	220	284	257	12	3	286	43
	132	"	"	"	276	212	"	31	80	400	300	325	298	12	4	285	43
	160	"	"	"	306	210	"	45	50	500	350	404	364	15	5	344	51
	180	"	"	"	306	230	"	45	50	500	350	429	389	15	5	372	51
80-20	90	125	80	170	236	190	283	30	100	370	220	234	207	12	3	232	40
	100	"	"	"	256	200	"	30	100	370	220	254	227	12	3	279	46
	112	"	"	"	256	212	"	30	100	370	220	284	257	12	3	286	46
	132	"	"	"	276	212	"	31	80	400	300	325	298	12	4	285	46
	160	"	"	"	306	210	"	45	50	500	350	404	364	15	5	344	54
	180	"	"	"	306	230	"	45	50	500	350	429	389	15	5	372	54

Quote e pesi suscettibili di variazione.
Dimensions and weights are subject to variations.

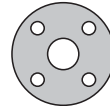
^(b)Peso senza motore elettrico
Weight without electric motor



**SALVATORE
ROBUSCHI
POMPE PARMA**

INGOMBRI MONOBLOCCO

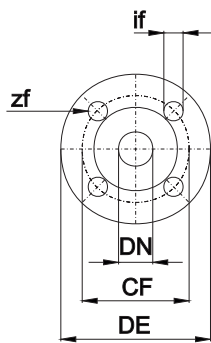
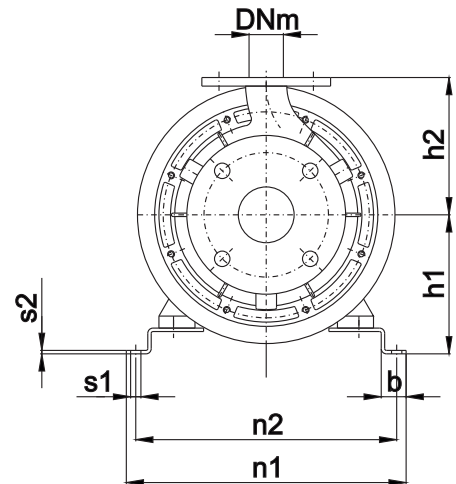
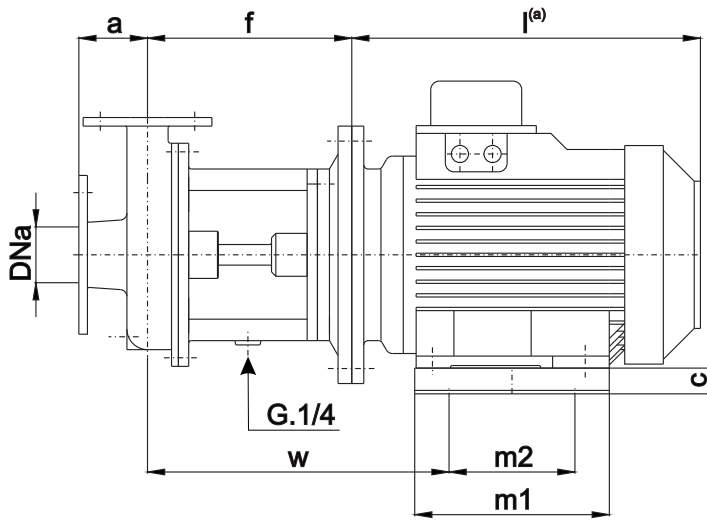
CLOSE COUPLED
OVERALL DIMENSIONS



**HD
HG**

N : T-1455

DATA: 17.10.2011

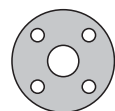


Dimensioni Flange - Flanges Dimensions EN 1092-1								
DNa - DNm	25	32	40	50	65	80	100	125
CF	85	100	110	125	145	160	180	210
DE	115	140	150	165	185	200	220	250
if	14	18	18	18	18	18	18	18
zf	4	4	4	4	4	8	8	8

MOTORE ELETTRICO - ELECTRIC MOTOR					
Grandezza Size IEC	Potenza in kw Power in kw			L ^(a) [mm]	Peso ^(a) Weight [kg]
	2 Poli 2 Poles	4 Poli 4 Poles	6 Poli 6 Poles		
	80	0.75	0.55		
80	1.1	0.75	0.55	232	10
90	1.5	1.1	0.75	245	13
90	2.2	1.5	1.1	270	16
100	3	2.2	1.5	298	21
100	-	3	-	298	23
112	4	4	2.2	312	30
132	5.5	5.5	3	381	40
132	7.5	7.5	4	381	50
132	9.2	9.2	5.5	381	50
160	11	11	7.5	486	76
160	15	15	11	486	85
160	18.5	-	-	486	95
180	22	18.5	-	576	125
180	-	22	15	576	145

Quote e pesi suscettibili di variazione.
Dimensions and weights are subject to variations.

^(a)Quota indicativa può variare in funzione della marca del motore
Not binding dimension that can change according to motor brand



Pompa tipo Pump size	Motore Elettrico Electric Motor UNEL-MEC	DIMENSIONI - DIMENSIONS [mm]															Peso ^(b) Weight [kg]
		Pompa - Pumps							Piedi - Feet								
		DNa	DNm	a	f	h1	h2	b	c	m1	m2	n1	n2	s1	s2	w	
25-16	80	40	25	60	187	155	147	23	75	300	220	203	183	10	3	177	15
	90	"	"	"	187	165	"	23	75	300	220	218	198	10	3	183	15
	100	"	"	"	207	155	"	25	55	280	200	240	218	12	3	240	21
	112	"	"	"	207	167	"	25	55	280	200	270	248	12	3	247	21
32-16	80	50	32	80	194	155	160	23	75	300	220	203	183	10	3	184	18
	90	"	"	"	194	165	"	23	75	300	220	218	198	10	3	190	18
	100	"	"	"	214	155	"	25	55	280	200	240	218	12	3	247	24
	112	"	"	"	214	167	"	25	55	280	200	270	248	12	3	254	24
	132	"	"	"	234	162	"	29	30	340	220	326	304	14	4	283	24
32-20	VEDI RS 32 - 20 SEE RS 32 - 20																
40-16	80	65	40	80	198	155	160	23	75	300	220	203	183	10	3	188	20
	90	"	"	"	198	165	"	23	75	300	220	218	198	10	3	194	20
	100	"	"	"	218	155	"	25	55	280	200	240	218	12	3	251	26
	112	"	"	"	218	167	"	25	55	280	200	270	248	12	3	258	26
	132	"	"	"	238	162	"	29	30	340	220	326	304	14	4	287	26
40-20	VEDI RS 40 - 20 SEE RS 40 - 20																
50-16	80	80	50	100	203	155	180	23	75	300	220	203	183	10	3	193	21
	90	"	"	"	203	165	"	23	75	300	220	218	198	10	3	199	21
	100	"	"	"	223	155	"	25	55	280	200	240	218	12	3	256	27
	112	"	"	"	223	167	"	25	55	280	200	270	248	12	3	263	27
	132	"	"	"	243	162	"	29	30	340	220	326	304	14	4	292	27
	160	"	"	"	273	210	"	45	50	500	350	404	364	15	5	311	32
50-20	80	80	50	100	221	155	200	23	75	300	220	203	183	10	3	211	27
	90	"	"	"	221	165	"	23	75	300	220	218	198	10	3	217	27
	100	"	"	"	238	155	"	25	55	280	200	240	218	12	3	271	33
	112	"	"	"	238	167	"	25	55	280	200	270	248	12	3	281	33
	132	"	"	"	261	162	"	29	30	340	220	326	304	14	4	310	33
	160	"	"	"	291	210	"	45	50	500	350	404	364	15	5	329	41
65-16	80	100	65	100	230	155	200	23	75	300	220	203	183	10	3	220	29
	90	"	"	"	230	165	"	23	75	300	220	218	198	10	3	225	29
	100	"	"	"	250	155	"	25	55	280	200	240	218	12	3	282	35
	112	"	"	"	250	167	"	25	55	280	200	270	248	12	3	290	35
	132	"	"	"	270	162	"	29	30	340	220	326	304	14	4	318	35
	160	"	"	"	300	210	"	45	50	500	350	404	364	15	5	338	43
65-20	90	100	65	100	229	190	225	30	100	370	220	234	207	12	3	225	35
	100	"	"	"	249	200	"	30	100	370	220	254	227	12	3	272	41
	112	"	"	"	249	212	"	30	100	370	220	284	257	12	3	279	41
	132	"	"	"	269	212	"	31	80	400	300	325	298	12	4	278	41
	160	"	"	"	299	210	"	45	50	500	350	404	364	15	5	337	49
	180	"	"	"	299	230	"	45	50	500	350	429	389	15	5	365	49
80-16	90	125	80	125	236	190	225	30	100	370	220	234	207	12	3	232	37
	100	"	"	"	256	200	"	30	100	370	220	254	227	12	3	279	43
	112	"	"	"	256	212	"	30	100	370	220	284	257	12	3	286	43
	132	"	"	"	276	212	"	31	80	400	300	325	298	12	4	285	43
	160	"	"	"	306	210	"	45	50	500	350	404	364	15	5	344	51
	180	"	"	"	306	230	"	45	50	500	350	429	389	15	5	372	51
80-20	90	125	80	125	236	190	250	30	100	370	220	234	207	12	3	232	40
	100	"	"	"	256	200	"	30	100	370	220	254	227	12	3	279	46
	112	"	"	"	256	212	"	30	100	370	220	284	257	12	3	286	46
	132	"	"	"	276	212	"	31	80	400	300	325	298	12	4	285	46
	160	"	"	"	306	210	"	45	50	500	350	404	364	15	5	344	54
	180	"	"	"	306	230	"	45	50	500	350	429	389	15	5	372	54

Quote e pesi suscettibili di variazione.
Dimensions and weights are subject to variations.

^(b)Peso senza motore elettrico
Weight without electric motor

